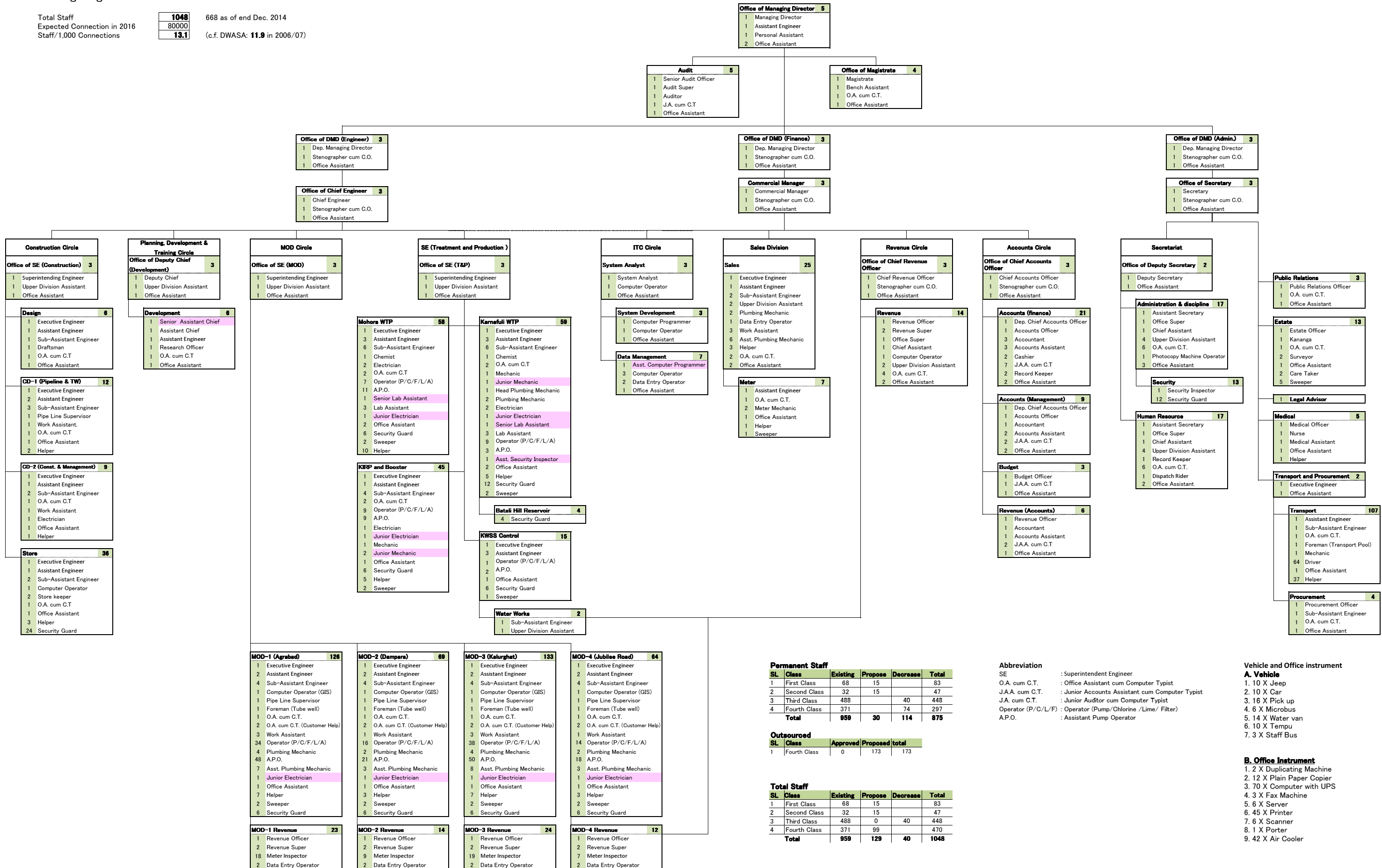


CWASA Organogram for 2016

Total Staff **1048** 668 as of end Dec. 2014  
 Expected Connection in 2016 **80000**  
 Staff/1,000 Connections **13.1** (c.f. DWASA: **11.9** in 2006/07)



**Permanent Staff**

SL	Class	Existing	Propose	Decrease	Total
1	First Class	68	15		83
2	Second Class	32	15		47
3	Third Class	488		40	448
4	Fourth Class	371		74	297
<b>Total</b>		<b>959</b>	<b>30</b>	<b>114</b>	<b>875</b>

**Outsourced**

SL	Class	Approved	Proposed	total
1	Fourth Class	0	173	173

**Total Staff**

SL	Class	Existing	Propose	Decrease	Total
1	First Class	68	15		83
2	Second Class	32	15		47
3	Third Class	488	0	40	448
4	Fourth Class	371	99	40	470
<b>Total</b>		<b>959</b>	<b>129</b>	<b>40</b>	<b>1048</b>

**Abbreviation**  
 SE : Superintendent Engineer  
 O.A. cum C.T. : Office Assistant cum Computer Typist  
 J.A.A. cum C.T. : Junior Accounts Assistant cum Computer Typist  
 J.A. cum C.T. : Junior Auditor cum Computer Typist  
 Operator (P/C/L/F) : Operator (Pump/Chlorine /Lime/ Filter)  
 A.P.O. : Assistant Pump Operator

**Vehicle and Office instrument**  
**A. Vehicle**  
 1. 10 X Jeep  
 2. 10 X Car  
 3. 16 X Pick up  
 4. 6 X Microbus  
 5. 14 X Water van  
 6. 10 X Tempu  
 7. 3 X Staff Bus

**B. Office Instrument**  
 1. 2 X Duplicating Machine  
 2. 12 X Plain Paper Copier  
 3. 70 X Computer with UPS  
 4. 3 X Fax Machine  
 5. 6 X Server  
 6. 45 X Printer  
 7. 6 X Scanner  
 8. 1 X Porter  
 9. 42 X Air Cooler